

Product Information

ExactMark 1kb DNA Ladder (250-10,000 bp), Ready to Use, 50µg

C/No.	BIO-5140-50ug
Concentration	0.1µg/µl
Packaging	1 X 50µg (100 applications)
Storage	25°C – 6 months -20°C – 24 months

Axil Scientific Pte Ltd
41 Science Park Road
#01-22/23 The Gemini
Singapore Science Park II
Singapore 117610



Page 1 of 4

Description

Used for sizing and approximate quantification of wide range double-stranded DNA on agarose gel. The ladder is composed of thirteen individual DNA fragments (in base pairs): 10000, 8000, 6000, 5000, 4000, **3000**, 2500, 2000, 1500, **1000**, 750, 500, and 250. It contains two reference bands of 3000 and 1000bp for easy orientation. Bromophenol blue is used as tracking dye.

Storage Buffer

10mM Tris-HCl (pH 8.0)
1mM EDTA

Quality Control Assay Data

Well-defined bands are formed upon running of agarose gel electrophoresis. The DNA concentration is determined with spectrophotometry. The absence of nucleases is confirmed by a direct nuclease activity assay.

Page 2 of 4

Protocol for Loading

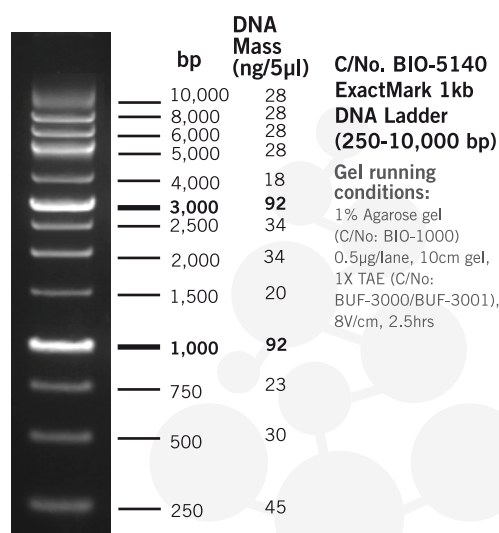
Load 5µl of the solution into a 5mm agarose gel lane.

It is recommended to load 1µl (0.1µg) of DNA ladder per 1mm of gel lane.

Recommendations

- Do not heat solution prior to loading.
- Mix 1 part of dye solution with 5 parts of DNA sample.
- Load equivalent amount of DNA sample and ladder.
- Adjust sample concentration to be approximately equal to the amount of DNA in the nearest band of the ladder for quantification purpose.
- Visualize DNA by staining with FloroSafe DNA Stain (C/No: BIO-5170-1ml).

Page 3 of 4



Page 4 of 4